



CNC FLAT BED LATHES

KLS SERIES

KLS-1840N | KLS-2660

KLS-1840N

Accessories

Features

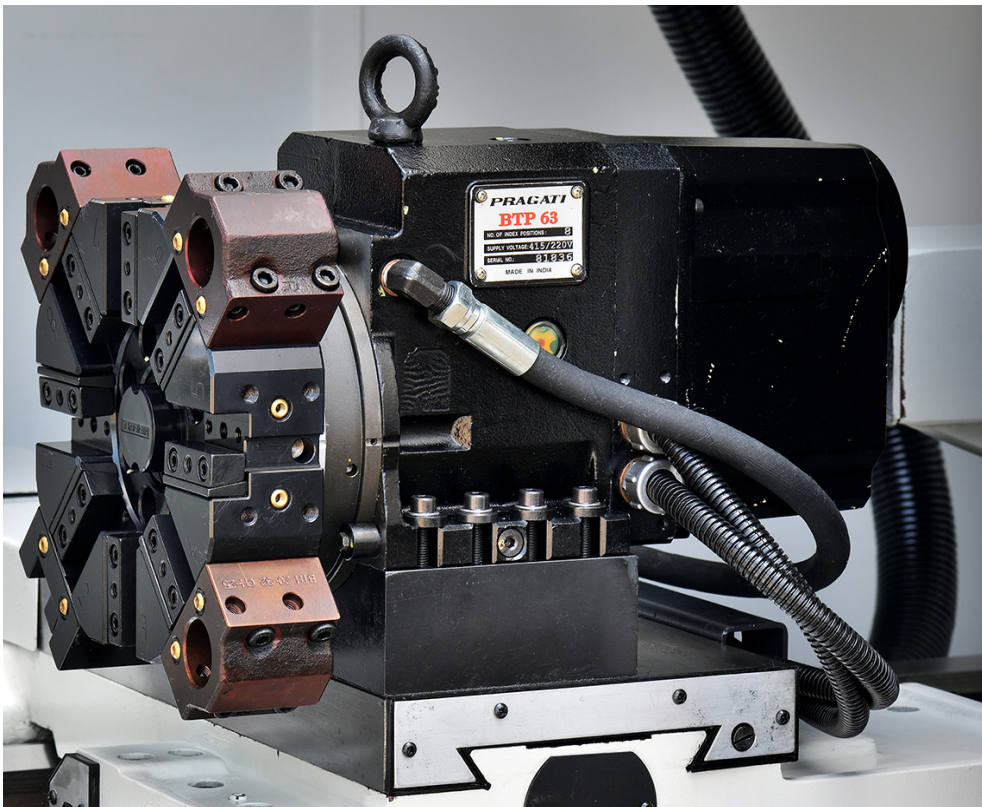
- Fanuc 0i TF CNC Control
- 7.5 hp (5 kw) AC Servo Spindle Motor
- 3" (76 mm) Spindle Through Hole
- FC30 Castings with extra Ribbing
- Induction Hardened & Ground Ways
- Hardened & Ground Alloy Steel Gears
- Large Precision Ground Ballscrews
- 100-2000 rpm Range
- Auto Lube System with Metered Check Valves

Quick Overview

Swing Over Bed	18" (457 mm)
Swing Over Cross Slide	9.84" (249.9 mm)
Width of Bed	13.8" (350.52 mm)
Spindle Speeds	10 - 2,000 rpm
Longitudinal Travel (Z-Axis)	38" (965 mm)
Cross Slide Travel (X-Axis)	11" (279.4 mm)
Net Weight	8,157 lbs (3699 kg)



KLS-1840N with 8-Station Turret & Hydraulic Chuck Option



8-Station Turret Option

Standard Equipment

1. FANUC 0i-Mate TF CNC Control
2. FANUC Servo Motor for X/Z-Axes
3. FANUC Servo Motor for Spindle
4. 4-Way Electrical Tool Post
5. 10" (254 mm) 3-Jaw Manual Chuck
6. Manual Tailstock
7. NSK Front Spindle Bearing
8. Lubrication and Coolant System
9. Heat Exchanger for Electrical Cabinet
10. LED Work Light
11. Tricolor Alarm Light
12. Full Cover

Available Options

1. 3-Jaw Scroll Chuck
2. 4-Jaw Independent Chuck
3. Hydraulic 10" (254 mm) Chuck w/ Closed Oil Cylinder
4. Hydraulic 10" (254 mm) Chuck w/ 2" (50.8 mm) Hollow Cylinder
5. Hydraulic 10" (254 mm) Chuck w/ 3" (76 mm) Hollow Cylinder
6. Hydraulic Tailstock
7. 6-Position Turret
8. 8-Position Turret
9. Follow Rest
10. Face Plate
11. Quick Change Tool Post
12. M.T. #5 Royal Live Center

KLS-2660N

Features

- Fanuc 0i TF CNC Control
- 10 hp (7.4 kw) AC Servo Spindle Motor
- 4" (101.6 mm) Spindle Through Hole
- FC30 Castings with extra Ribbing
- Induction Hardened & Ground Ways
- Hardened & Ground Alloy Steel Gears
- Large Precision Ground Ballscrews
- Auto Lube System with Metered Check Valves
- Four Ranges Spindle Speed

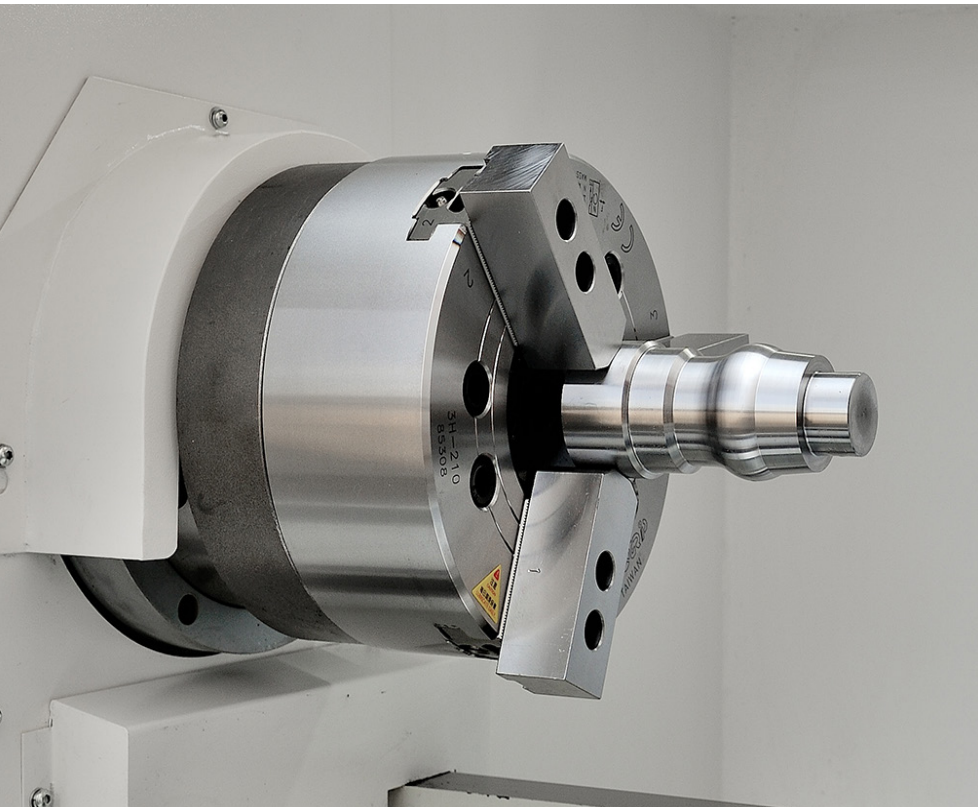
Quick Overview

Swing Over Bed	26" (660 mm)
Swing Over Cross Slide	9.05 (229.87 mm)
Width of Bed	16.9" (429.26 mm)
Spindle Speeds	27-1630 rpm
Longitudinal Travel (Z-Axis)	57.8" (1468.12 mm)
Cross Slide Travel (X-Axis)	14.4" (365.76 mm)
Net Weight	5,236 lbs (2375 kg)



KLS-2660N

Accessories



Hydraulic Chuck Option

Standard Equipment

1. FANUC 0i-Mate TF CNC Control
2. FANUC Servo Motor for X/Z-Axes & Spindle
3. NSK Front Spindle Bearing
4. 12" (304 mm) 3-Jaw Manual Chuck
5. 4-Station Electrical Tool Post
6. Full Cover
7. Manual Tailstock
8. Lubrication and Coolant System
9. Heat Exchanger for Electrical Cabinet
10. LED Work Light

Available Options

1. 3-Jaw Scroll Chuck
2. 4-Jaw Independent Chuck
3. Hydraulic Chuck 8" (203 mm) (A1-6 Spindle)
4. 3-Jaw Hydraulic 10" (254 mm) Chuck
5. 3.6" (91.44 mm) Through Bore Hydraulic Station
6. 10" (254 mm) Hydraulic Chuck
7. Hydraulic Tailstock
8. 6-Position Turret
9. Follow Rest
10. Face Plate
11. Quick Change Toolpost
12. M.T. #5 Royal Live Center

Additional Information

Controller System

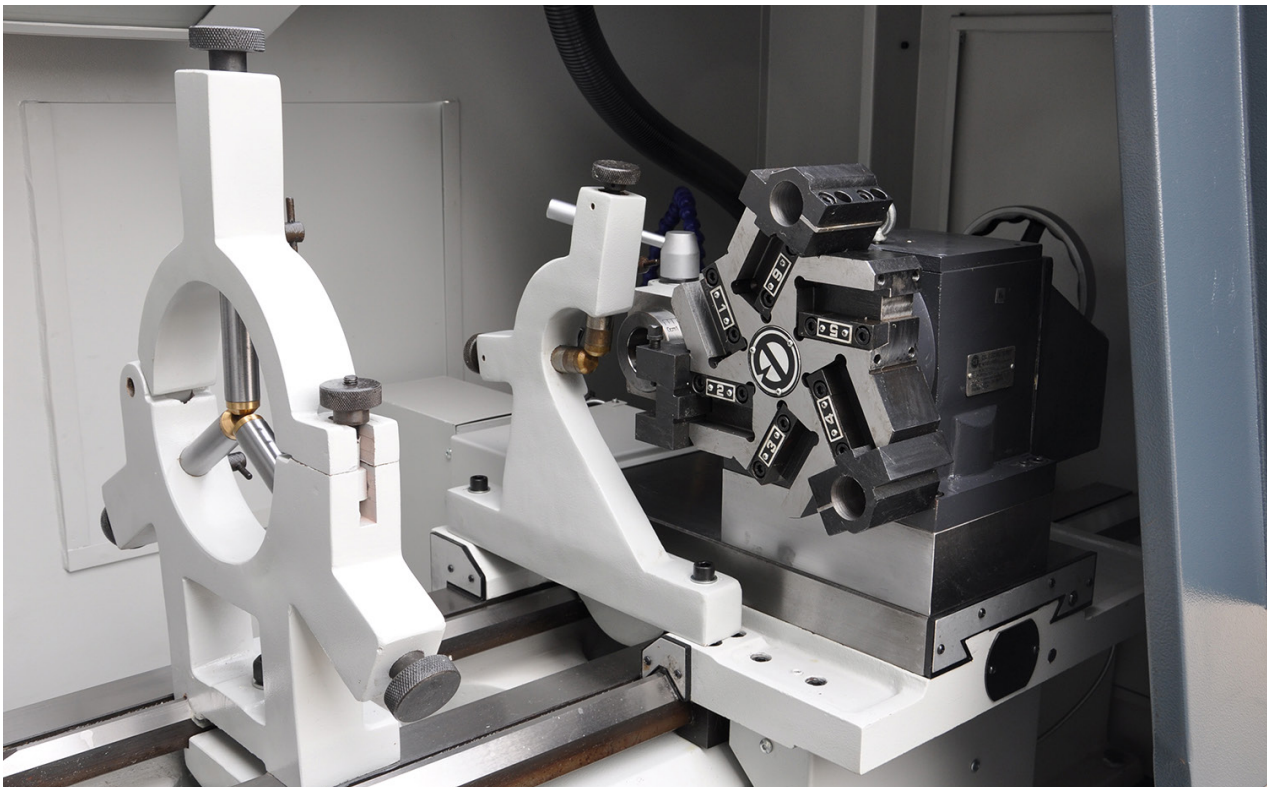
The standard configuration is the FANUC system. This FANUC 0i TF(S) Control System is specifically designed for demanding machine tool applications. Its calculation capacity and high speed ensure maximum power and helps increase programming flexibility. Optional control systems are available, which include SIMENS, FAGOR, MITSUBISHI, and GSK.



Manual operation via 2 electronic hand-wheel, this is ideal single part construction or repair work. Overall this is an intuitive & easy to learn control system.

CNC Precision Teach Lathes with Tighter Tolerances

These CNC Precision Teach Lathes are available for the most precision demanding workpieces. They come in come in work capacities of 14" x 40" (355.6 x 1016 mm) to 22" x 120" (558 x 3048 mm) with Spindle Bores of 1.5" to 3.582" (38.1 x 90.9828 mm) and up to 15 hp (11 kw) of Spindle Motor.



Manual Steady Rest & Follow Rest

6-Position Turret Option

Specifications

Model	KLS-1840	KLS-2660N
Swing Over Bed	18" (457 mm)	26" (660 mm)
Swing Over Cross slide	9.84" (249.93 mm)	9.05" (229 mm)
Distance Between Centers	39.4" (1000.7 mm)	59" (1498 mm)
Width of Bed	13.8" (350.5 mm)	16.9" (429 mm)
Spindle Nose	D1-8	D1-8
Spindle Bore	3" (76 mm)	4.13" (104.90 mm)
Spindle Taper	MT #7	1:20 taper; MT #7 with Reducing Sleeve
Spindle Speeds	10 - 2,000 rpm	27-135, 55-270, 160-805, 325-1630 rpm (4 Ranges)
Longitudinal Travel (Z-Axis)	38" (965 mm)	57.8" (1468.1 mm)
Cross Slide Travel (X-Axis)	11" (279 mm)	14.4" (365.7 mm)
Z-Axis Ballscrew Diameter	1.259", 10 mm pitch (31.978mm , 10mm pitch)	1.575", 10 mm pitch (40005 mm , 10 mm pitch)
X-Axis Ballscrew Diameter	0.787", 5 mm pitch (19.989 mm , 5 mm pitch)	1", 5 mm pitch (25.4 mm , 5 mm pitch)
Z-Axis Rapid Traverse Speed	394"/min (10007mm/min)	400"/min (10160mm/min)
X-Axis Rapid Traverse Speed	315"/min (8001mm/min)	394"/min (10007 mm/min)
Tailstock Quill Diameter	Ø 3" (76 mm)	Ø 3" (76 mm)
Tailstock Quill Travel	5" (127 mm)	6" (152 mm)
Tailstock Taper	MT #5	MT #5
Spindle Motor	7.5 hp (opt. 10hp) 5.5 kw (opt. 7 kw)	10 hp (7 kw)
Z-Axis AC Servo Motor	1.86 hp (1.38 kw)	1.13 hp (0.84 kw)
X-Axis AC Servo Motor	1.6 hp (1.1 kw)	0.6 hp (0.4 kw)
Net Weight	8,157 lbs (3699 kg)	5,236 lbs (2375 kg)
Gross Weight	8,790 lbs (3987 kg)	6,310 lbs (2862 kg)
Packing Dimension	146" x 49" x 62" (3708 mm x 1244 mm x 1574 mm)	91" x 47" x 60" (2311 mm x 1193 mm x 1524 mm)

The above specifications are for reference only, we reserve the right to alter them without further notice.



Kent Industrial USA, INC

1231 Edinger Avenue
Tustin, CA 92780 USA
Phone: +1.714.258.8526
www.kentusa.com