

**KENT  
CNC**

# CNC Flat Bed Lathe CAC-Series



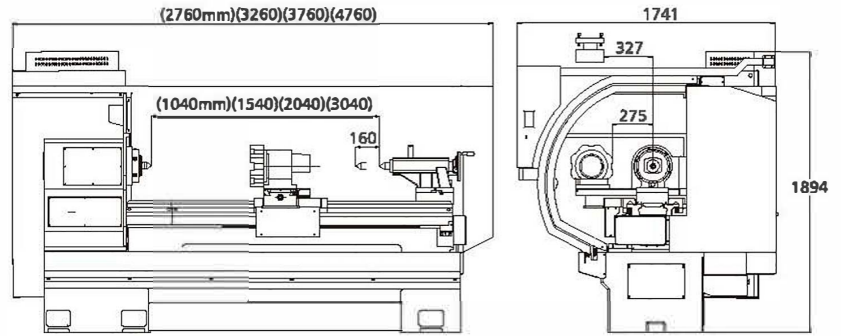
**Precision Performance:** Our powerful headstock, equipped with high-precision taper roller bearings, ensures superior rigidity and accuracy. Smooth operation is guaranteed with precision gears and automatic lubrication for all bearings.

**Ample Spindle Bore:** With a generous 15" (380 mm) spindle bore, our lathe is perfect for handling large oil country pipes with ease.

**Stable Construction:** Experience maximum stability and reliability with our lathe's combination of 3 V-ways and 1 flat bedway, all hardened and ground for durability. The V-shaped design, bolstered by slanted shapes at each end, ensures firm support for the lathe body.

**Built to Last:** Crafted with Meehanite casting, our lathe boasts a robust ribbed frame capable of enduring heavy-duty work with high accuracy and prolonged operational hours.

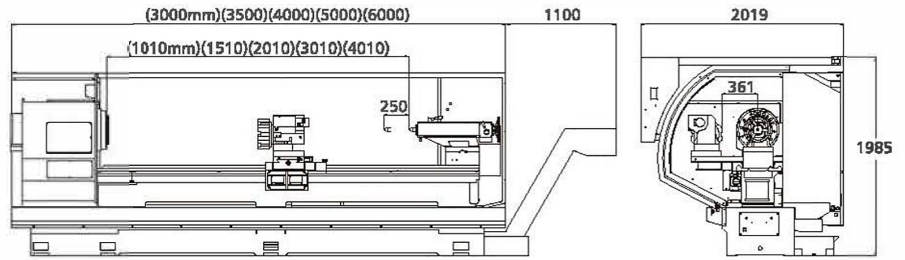
# CAC Series



<b>Model</b>		<b>unit</b>	<b>20</b>		<b>22</b>	
Capacity	Center height	mm (inch)	255(10.04")		280(11.02")	
	Distance between centers	mm (inch)	1000(39"), 1500(59"), 2000(79"), 3000(118")			
	Swing over bed	mm (inch)	510(20.08")		560(22.05")	
	Swing over gap	mm (inch)	710(27.95")		760(29.92")	
	Swing over cross slide	mm (inch)	290(11")		340(13.39")	
	Width of bed	mm (inch)	350(14")			
	Bed way		3 V way + 1 flat way			
	Cross slide width	mm (inch)	220(8.66")			
	Gap width	mm (inch)	*305(12")			
	Headstock & main spindle	Spindle bore / nose	mm (inch)	85(3.4") D1-8 / *105(4") D1-11		
Spindle taper			MT #7			
Spindle speed		rpm	3.4" bore(30~2000) / *4" bore(30~1500)(auto 3 steps)			
Cross slide (X-axis) & Carriage (Z-axis)	Cross slide travel (X-axis)	mm (inch)	380(15")			
	Longitudinal travel(Z-axis)	mm (inch)	1000(39"), 1500(59"), 2000(79"), 3000(118")			
	AC servo motor (X-axis)	kw	1			
	AC servo motor (Z-axis)	kw	1			
	Dia of ball screw (X-axis)	mm	Ø25xP5xC3			
	Dia of ball screw (Z-axis)	mm	Ø40xP10xC5			
	Rapid traverse speed (X-axis)	mm / min	6000			
Rapid traverse speed (Z-axis)	mm / mm	8000				
Tailstock	Quill taper		MT #5			
	Quill diameter	mm (inch)	Ø75(3")			
	Quill travel	mm (inch)	160(6")			
Turret / toolpost	Tool station		*horizontal type 4T		*vertical type 8T / *vertical type 10T	
	Tool shank	mm	20			
Motor	Main spindle	kw	11/*15 [*15hp(*15hp inverter)]			
	Headstock speed auto change x 1	w	25			
	Lube system pump	w	22			
	Hydraulic oil pump	hp	2			
	Coolant pump	hp	1/8(90w)			
Accuracy	Positioning	mm	+0.01 / 300			
	Repeatability	mm	+0.005			
	Spindle run-out	mm	+0.01			
Tank	Hydraulic tank	l	60			
Capacity	Coolant tank	l	66			
Controller	Controller	Brand	Syntec / Simens / Fagor / Fanuc / Mitsubishi			
	Controllable	axis	2			
Weight	Net / Gross	kg (lb)	2800(6160) /	3100(6820) /	3400(7480) /	4000(8800) /
			3000(6600)	3350(7370)	3700(8140)	4400(9680)
Dimensions	Floor space (full guard)	mm (inch)	2850x1650x1950	3350x1650x1950	3850x1650x1950	4850x1650x1950
			(112"x65"x77")	(132"x65"x77")	(152"x65"x77")	(191"x65"x77")
	Packing size (full guard)	mm (inch)	3100x2200x2200	3600x2200x2200	4100x2200x2200	5100x2200x2200
			(122"x87"x87")	(142"x87"x87")	(161"x87"x87")	(200"x87"x87")

\* Design and specs are subject to change without notice.  
\* is option.

# CAC Series



<b>Model</b>		<b>unit</b>	<b>26</b>		<b>30</b>		
Capacity	Center height	mm (inch)	330(12.99")		380(14.96")		
	Distance between centers	mm (inch)	920(36"), 1420(56"), 1920(76"), 2920(115"), 3920(154")				
	Swing over bed	mm (inch)	660(25.98")		760(29.92")		
	Swing over gap	mm (inch)	940(37.01")		1040(40.95")		
	Swing over cross slide	mm (inch)	440(17")		540(21")		
	Width of bed	mm (inch)	450(17")				
	Bed way		3V + 1 Flat way				
	Cross slide width	mm (inch)	250(10")				
	Gap width	mm (inch)	*350(13.78")				
	Headstock & main spindle	Spindle bore / nose	mm (inch)	105(4")D1-11 / *155(6")A2-11 / *180(7")A2-15 / *230(9")A2-15			
Spindle taper			MT #7				
Spindle speed		rpm	4" bore(20-1500rpm) / *6" bore(20-1000rpm) / *7" bore(20-1000rpm) / *9" bore(20-800rpm)(auto 3 steps)				
Cross slide (X-axis) & Carriage (Z-axis)	Cross slide travel (X-axis)	mm (inch)	405(16")				
	Longitudinal travel(Z-axis)	mm (inch)	970(38"), 1470(57"), 1970(77"), 2970(117"), 3970(156")				
	AC servo motor (X-axis)	kw	1				
	AC servo motor (Z-axis)	kw	2				
	Dia of ball screw (X-axis)	mm	Ø32xP5xC3				
	Dia of ball screw (Z-axis)	mm	Ø50xP10xC5				
	Rapid traverse speed (X-axis)	mm / min	6000				
Rapid traverse speed (Z-axis)	mm / mm	8000					
Tailstock	Quill taper		MT #5				
	Quill diameter	mm (inch)	Ø105(4") / * rotation Ø165(6.5")				
	Quill travel	mm (inch)	250(10")				
Turret / toolpost	Tool station		*horizontal type 4T		*vertical type 8T / *vertical type 10T		
	Tool shank	mm	25				
Motor	Main spindle	kw	11 / *15 [*20hp(20hp inverter) / *30hp(30hp inverter)]				
	Headstock speed auto change x 1	w	25				
	Lube system pump	w	22				
	Hydraulic oil pump	hp	2				
	Coolant pump	hp	1/8(90)				
Accuracy	Positioning	mm	+0.01 / 300				
	Repeatability	mm	+0.005				
	Spindle run-out	mm	+0.01				
Tank	Hydraulic tank	l	60				
Capacity	Coolant tank	l	37	93	93	112	112
Controller	Controller	Brand	Simens / Fagor / Fanuc / Mitsubishi				
	Controllable	axis	2				
Weight	Net / Gross	kg (lb)	3700(8140) /	4000( 8800) /	4300(9460) /	5000(11000) /	5700(12540) /
			3900(8580)	4250(9350)	4650(10230)	5450(11990)	6250(13750)
Dimensions	Floor space (full guard)	mm (inch)	3200x2000x2000	3700x2000x2000	4200x2000x2000	5200x2000x2000	6200x2000x2000
			(114"x79"x79")	(134"x79"x9")	(154"x79"x79")	(193"x79"x79")	(232"x79"x79")
	Packing size (full guard)	mm (inch)	3500x2200x2200	4000x2200x2200	4500x2200x2200	5500x2200x2200	6500x2200x2200
			(138"x87"x87")	(158"x87"x87")	(177"x87"x87")	(217"x87"x87")	(256"x87"x87")

\* Design and specs are subject to change without notice.

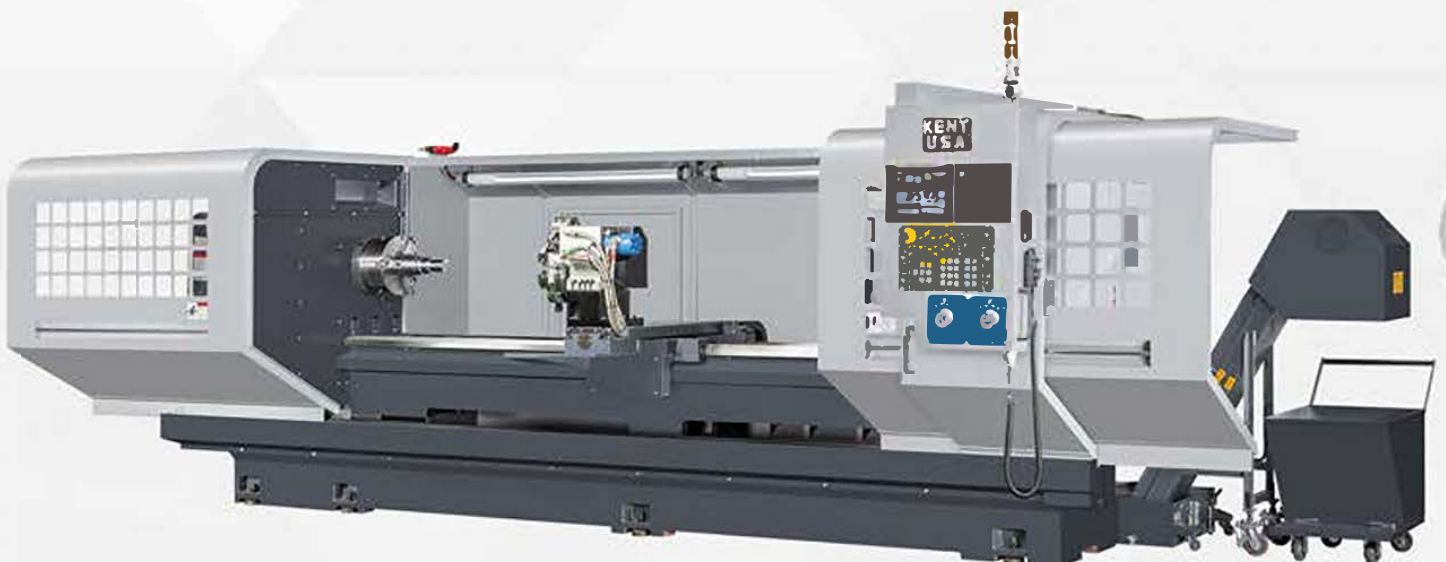
\* is option.

## **STANDARD ACCESSORIES**

- 1) CNC controller
- 2) Spindle + X / Z servo motors
- 3) Manual tailstock
- 4) Half splash guard
- 5) Pendant operation box
- 6) Manual pulse generator
- 7) RS232 interface
- 8) Electric cabinet with fans
- 9) Work light & alarm light
- 10) Standard tool box & operation manual
- 11) Leveling pads & screws
- 12) Lubrication system
- 13) Coolant equipment
- 14) Steady rest (roller type)
- 15) Dead center
- 16) Mechanical one year warranty
- 17) Controller two year warranty
- 18) Machine color : Key East standard (RAL 7015/7035)

## **OPTIONAL ACCESSORIES**

- 1) 3-jaw chuck in manual / hydraulic / pneumatic types
- 2) 4-jaw chuck in manual types
- 3) Double chuck
- 4) V8 turret in hydraulic / electric types
- 5) H4 turret in hydraulic / electric types
- 6) Two-speed tailstock / manual rotating tailstock / hydraulic tailstock
- 7) Live center
- 8) Chip conveyor + cart
- 9) Boring attachment
- 10) Mist collector
- 11) Full splash guard
- 12) Headstock oil cooler
- 13) Hydraulic brake for spindle
- 14) Hydraulic steady rest
- 15) Heat exchanger on electric cabinet
- 16) Refrigerator on electric cabinet
- 17) Taiwan made motor + inverter for spindle
- 18) Transformer
- 19) C axis
- 20) Live tooling



# OPTIONAL ACCESSORIES



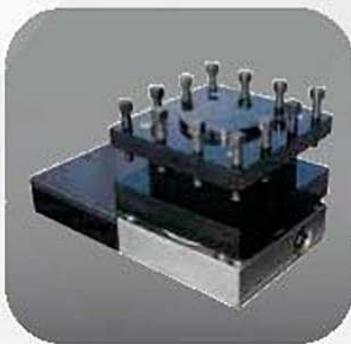
3-Jaw  
Manual Chuck



4-Jaw  
Independent Chuck



4-Jaw  
Hydraulic Chuck



H4 Turret



V8 / V10 Turret



Live  
Tooling Turret



Hydraulic  
Spindle Brake



Chip Conveyor



Hydraulic  
Tailstock



Headstock  
Oil Cooler



Boring  
Attachment



Steady Rest



Heavy Duty  
Steady Rest

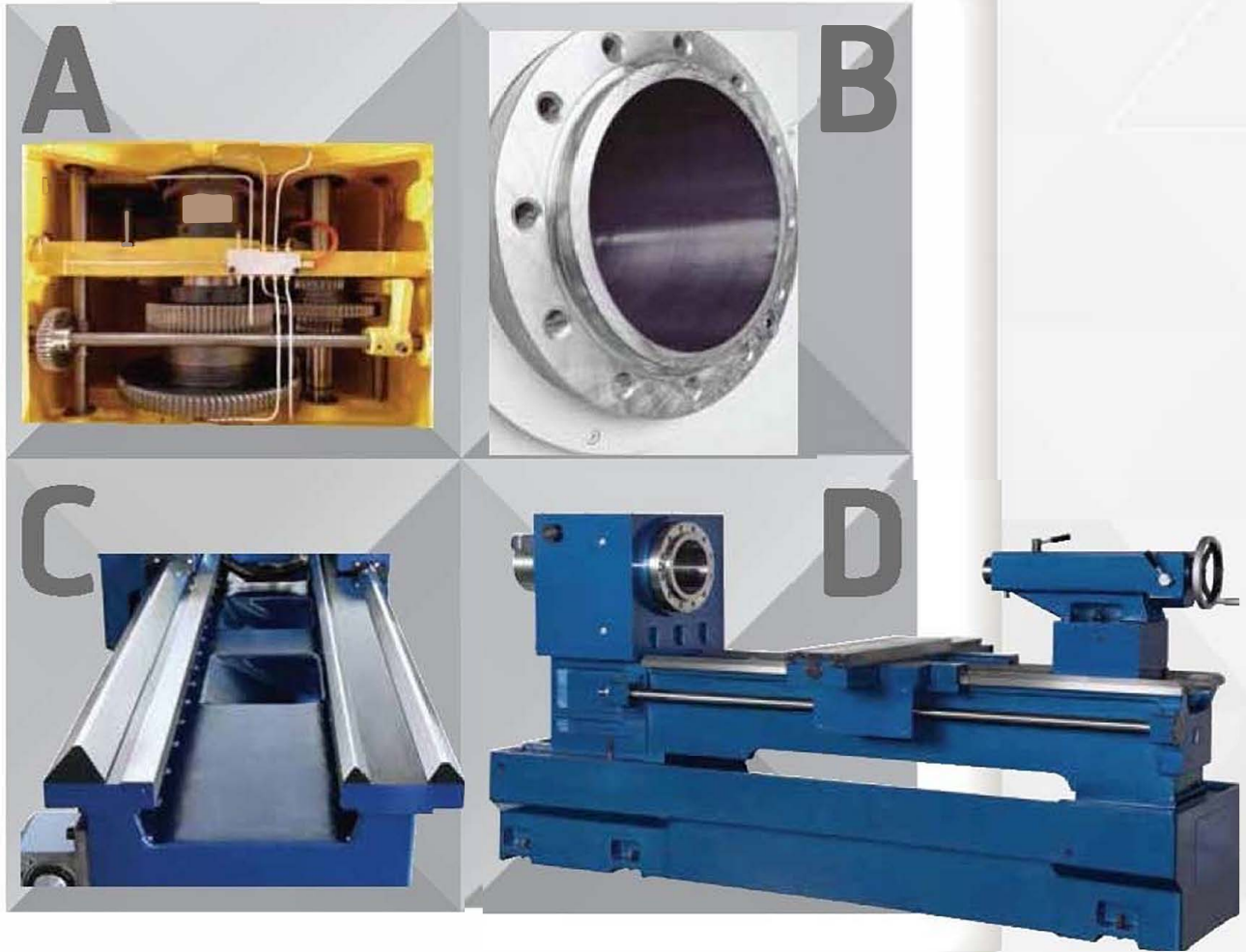


3 Point  
Follow Rest



Follow Rest

**KENT  
CNC**



## **KENT Industrial (USA) Inc.**

**1231 Edinger Avenue, Tustin, CA, 92780 USA**

**Phone: (714) 258-8526**

**Toll Free: 1-800-KENT-USA (1-800-536-8872)**

**Fax: (714) 258-8530**

**<http://www.kentusa.com/>**

**[sales@kentusa.com](mailto:sales@kentusa.com)**

